

## CASE STUDY

# SIG Design & Technology provides materials for #ourweebigbuild charity project



Doing our bit for the Play Alloa children's charity #ourweebigbuild

Project: Play room for Scottish children's charity

Address: Alloa, Clackmannanshire

Product: Armourplan SG fleece-backed PVC

Client: [Play Alloa](#)

Architect: [Lawrie Orr](#)

SIG Design & Technology has lent its support to the building of a purpose-built play room for the Scottish Children's charity, Play Alloa. Part of SIG UK Exteriors, SIG Design & Technology has supplied roofing materials and technical support free of charge to Play Alloa's [#ourweebigbuild](#) project.

After two decades of sterling work within Clackmannanshire providing play and social opportunities together with additional support for children and adults with disabilities, Play Alloa has finally moved into its very own premises.

The new building, which is in Broad Street Alloa, has a huge rear garden where three flatlets have been knocked

through to create a flexible, flowing space including a large purpose built games room.

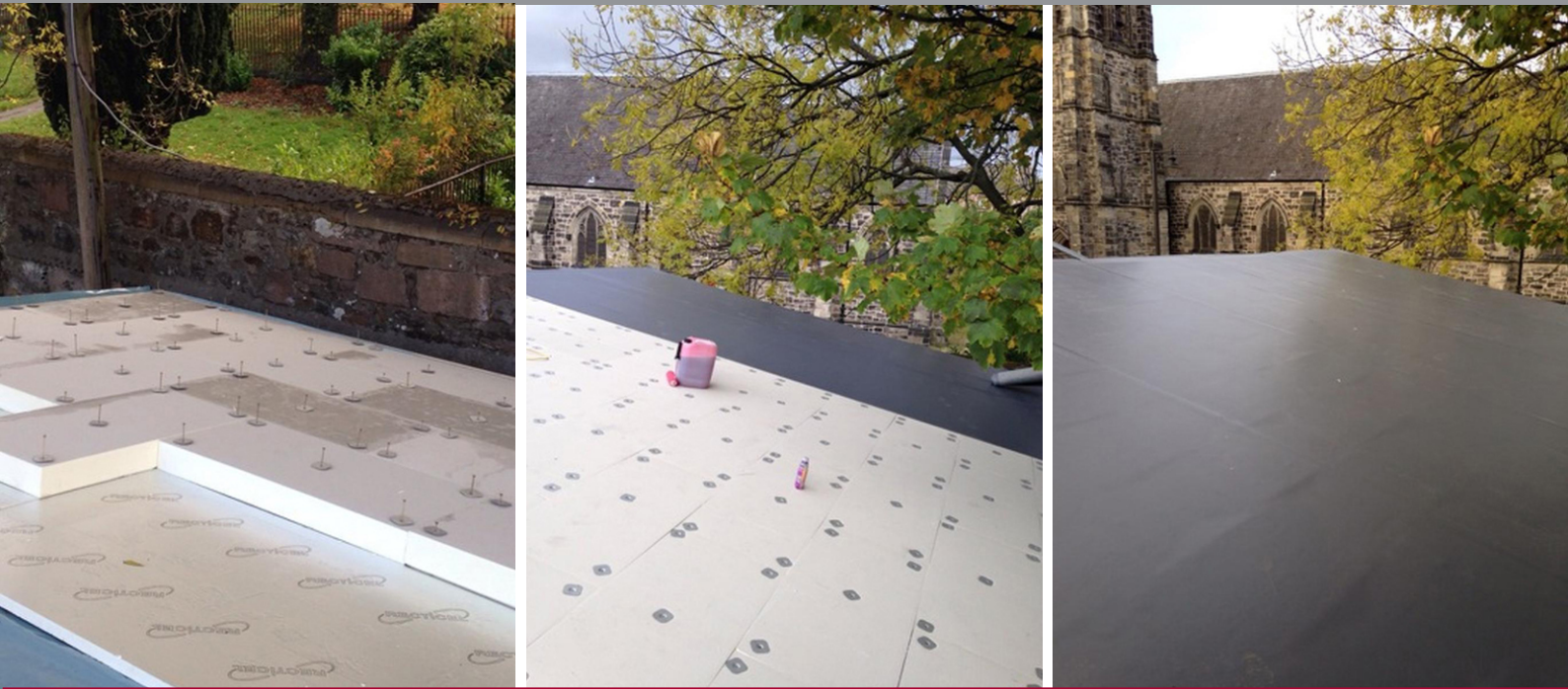
Chartered architect, Lawrie Orr of Alloa developed a generic specification for the 85m<sup>2</sup> bonded, warm roof build up in a RAL 7015 finish and said that working with SIG Design & Technology made the process very straightforward.

SIG Design & Technology selected IKO's Armourplan SG PVC membrane in slate grey (RAL 7015) as the fleece backed single ply is supplied in 2m widths which minimises hot welding on site without naked flames. The roof build up also comprises Recticel tissue faced insulation (mechanically fixed) and a PE VCL layer. SIG Design & Technology also supplied standing seam profiles to create a water check, preventing wind-driven rain being blown off the roof and onto building users.

To comply with regulations, Design & Technology's technical team checked local wind zones against wind uplift calculations (to meet BS EN 1991-1-1-4) and supplied

## CASE STUDY

# SIG Design & Technology provides materials for #ourweebigbuild charity project



Installation of Armourplan SG fleece-backed PVC onto Play Alloa's new games room

wind load calculations plus COSHH and other data sheets. Design & Technology's field technician will visit site to ensure that the roof has been installed correctly and offer contractor Stirling Roofing support if needs be.

Play Alloa's Chairman, Bob Davis said: "My own 27 year old daughter Emily has been coming to Play Alloa practically all her life. These 'Special Young People' will really benefit from the new facilities not only at club meetings. The fully refurbished premises will also be available for parents and children to use for their own events and parties seven days a week. Many children with disabilities need the reassurance that stimulating, familiar surroundings provide. [#ourweebigbuild](#) project will provide exactly that!"

SIG Design & Technology's technical manager, Steve Cleminson said; "We made sure that the roof at Play Alloa's [#ourweebigbuild](#) project fully complies with regulations. All our projects need to meet our [#PerfectRoof](#) guidelines.

Design & Technology has identified the challenges and ensures that a roof's design meets a building's requirements. Our eight steps follow the process from product selection and design expertise through to full guarantees and planned maintenance. This know-how is just part of the service that is provided absolutely free to customers.

### More information

- Visit the Armourplan SG Product pages and downloads, including the Armourplan Brochure, data sheet and BIM: <http://bit.ly/ArmourplanSG>
- Learn more about the 8 steps to the #PerfectRoof: <http://bit.ly/PerfectRoofAlloa>
- To find out more about Armourplan call SIG Design & Technology on 01509 505714 or visit [www.singleply.co.uk](http://www.singleply.co.uk)

