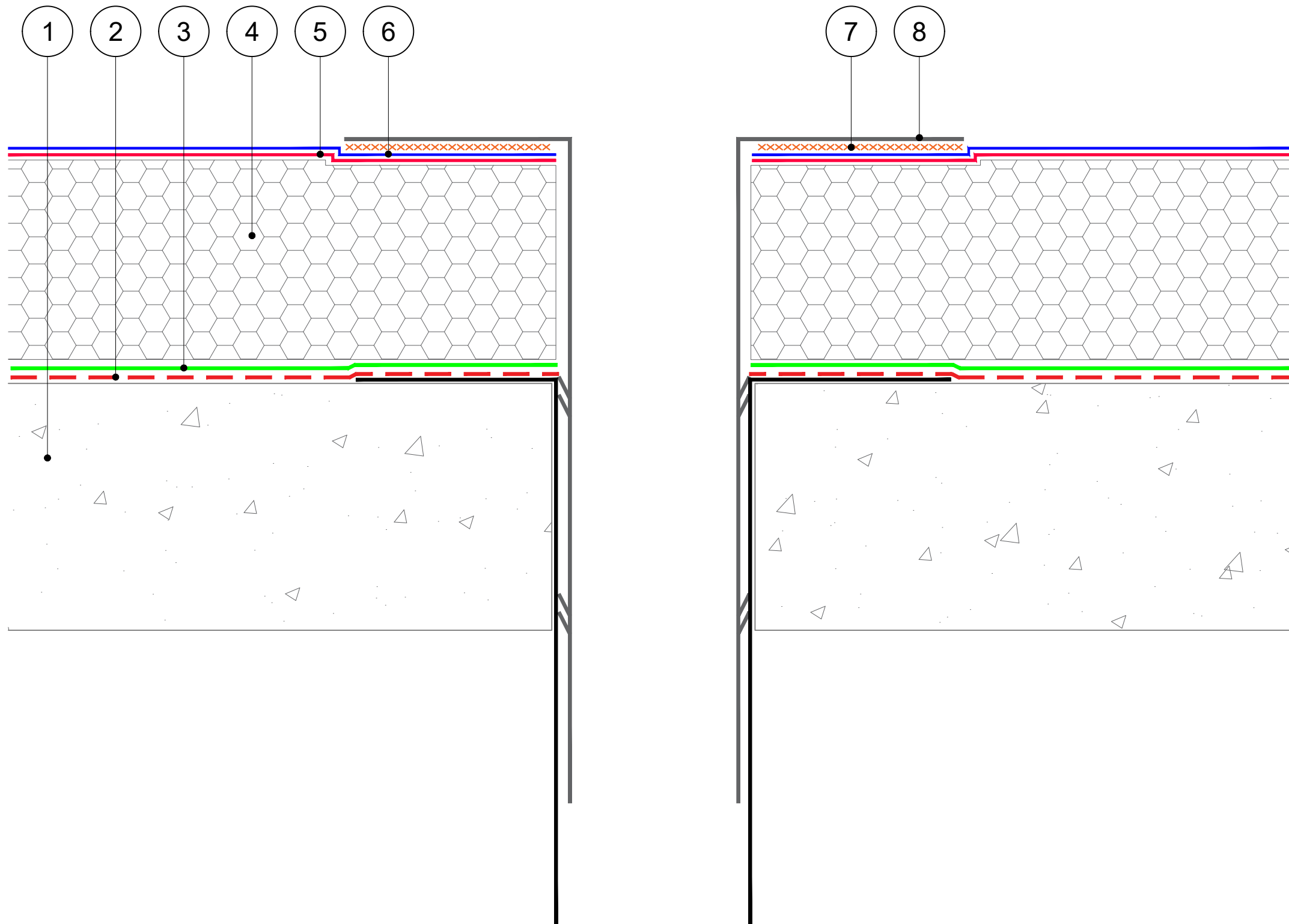


1. Substrate designed to 1:40 falls (or flat with Tapered Insulation) primed with appropriate SIGNature Primer.
2. SIGNature Air and Vapour Control Layer.
3. IKOpro High Performance PU Adhesive for bonded Insulation.
4. SIGNature approved PIR Insulation, Tapered/Flatboard - thickness to achieve design U-value, designed to 1:40 falls as per BS6229:2018).
5. Spectrabond Low Foam PU Adhesive / IKOpro Sprayfast FMA Adhesive for bonded membrane.
6. Armourplan PSG / SG membrane.
7. Hot Air Weld of Armourplan Refurb RWO.
8. Armourplan PVC Refurb RWO - Installed in accordance with the Armourplan System Installation Guidelines.



The Waterproofing System should be installed in accordance with BS6229:2018 and Accuroof project Specification.

The details shown are indicative and for approval only and do not form part of any contract.

Data sheets for all IKO Polymeric and IKO PLC products are available on request.

Project specifications are available on request.

A	11/10/23	AT	Original Detail
Rev:	Date:	By:	Description:

ACCUROOF

Unit 31F, Mannheim House, Gelders Hall Road,
Shepshed, Loughborough, LE12 9NH
Tel: 01509 501731
Email: Technical@accuroof.co.uk
Web: www.accuroof.co.uk

Drawing No:	SIG-ASG-08	Rev:	A
-------------	------------	------	---

Scale:	Not To Scale	Date:	11/10/2023
--------	--------------	-------	------------

Drawing:	Vertical RWO - Refurb
----------	-----------------------