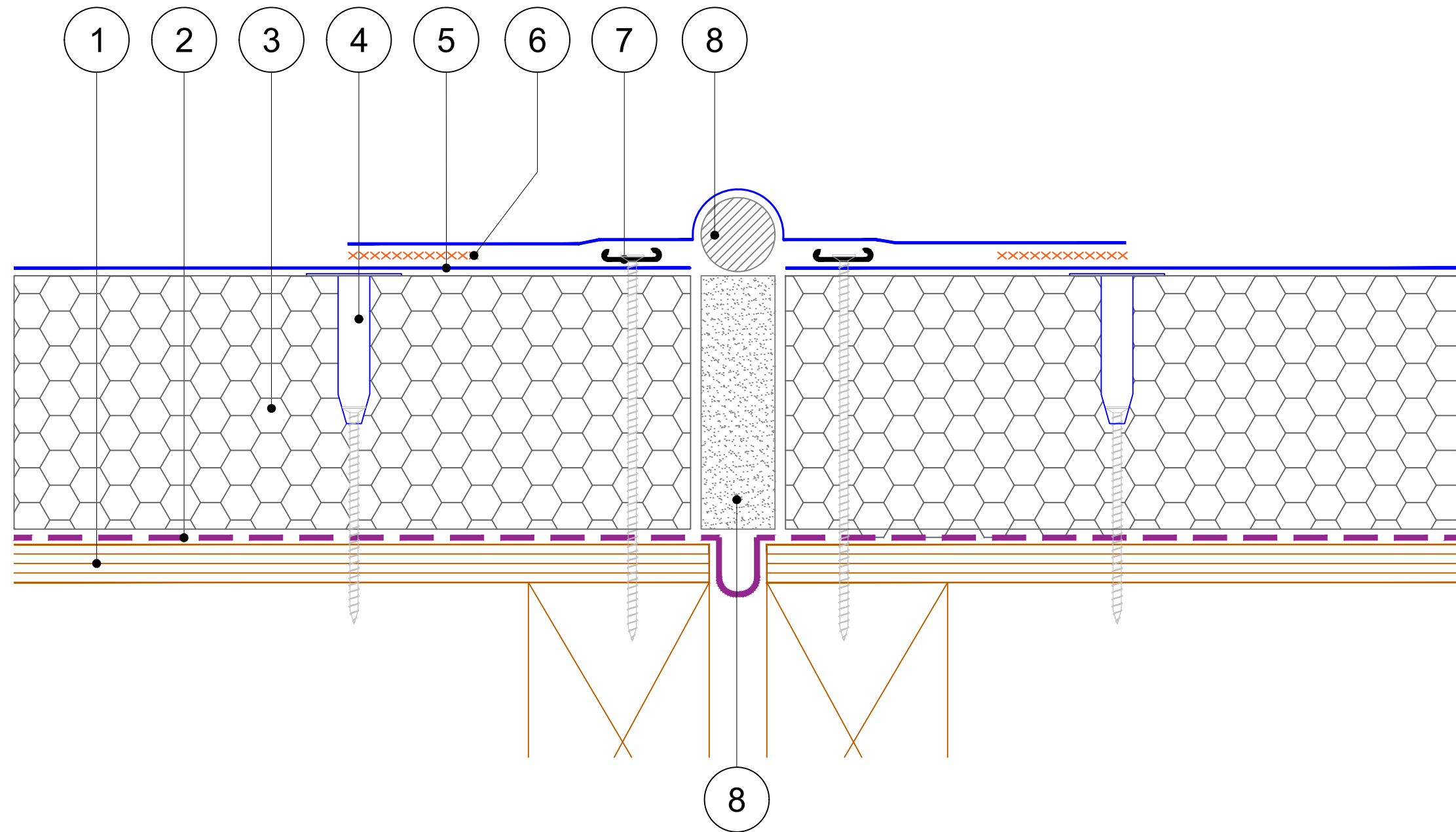


1. Substrate designed to 1:40 falls (or flat with Tapered Insulation) primed with appropriate SIGNature Primer.
2. Spectravap Polyethylene Vapour Control Layer.
3. SIGNature approved PIR Insulation, Tapered/Flatboard - thickness to achieve design U-value, designed to 1:40 falls as per BS6229:2018).
4. IKOfix Insulation Tube with appropriate IKOfix Fixing - see IKO Fixing Guide for Tube and Fixing length.
5. IKO Armourplan P / SM Membrane.
6. Min 60mm Hot Air Weld.
7. Armourplan Flat Toothed Bar fixed with appropriate IKOfix Fixings - Flat toothed bar termination to be installed horizontally or vertically.
8. Insulation / Foam Filler.



The Waterproofing System should be installed in accordance with BS6229:2018 and AccuRoof project Specification.

The details shown are indicative and for approval only and do not form part of any contract.

Data sheets for all IKO Polymeric and IKO PLC products are available on request.

Project specifications are available on request.

A	11/10/23	BP	Original Detail
Rev:	Date:	By:	Description:



Unit 31F, Mannheim House, Gelders Hall Road,
Shepshed, Loughborough, LE12 9NH
Tel: 01509 501731
Email: Technical@accuroof.co.uk
Web: www.accuroof.co.uk

Drawing No:	SIG-ASM-26	Rev:	A
-------------	------------	------	---

Scale:	Not To Scale	Date:	11/10/2023
--------	--------------	-------	------------

Drawing: Expansion Joint Detail