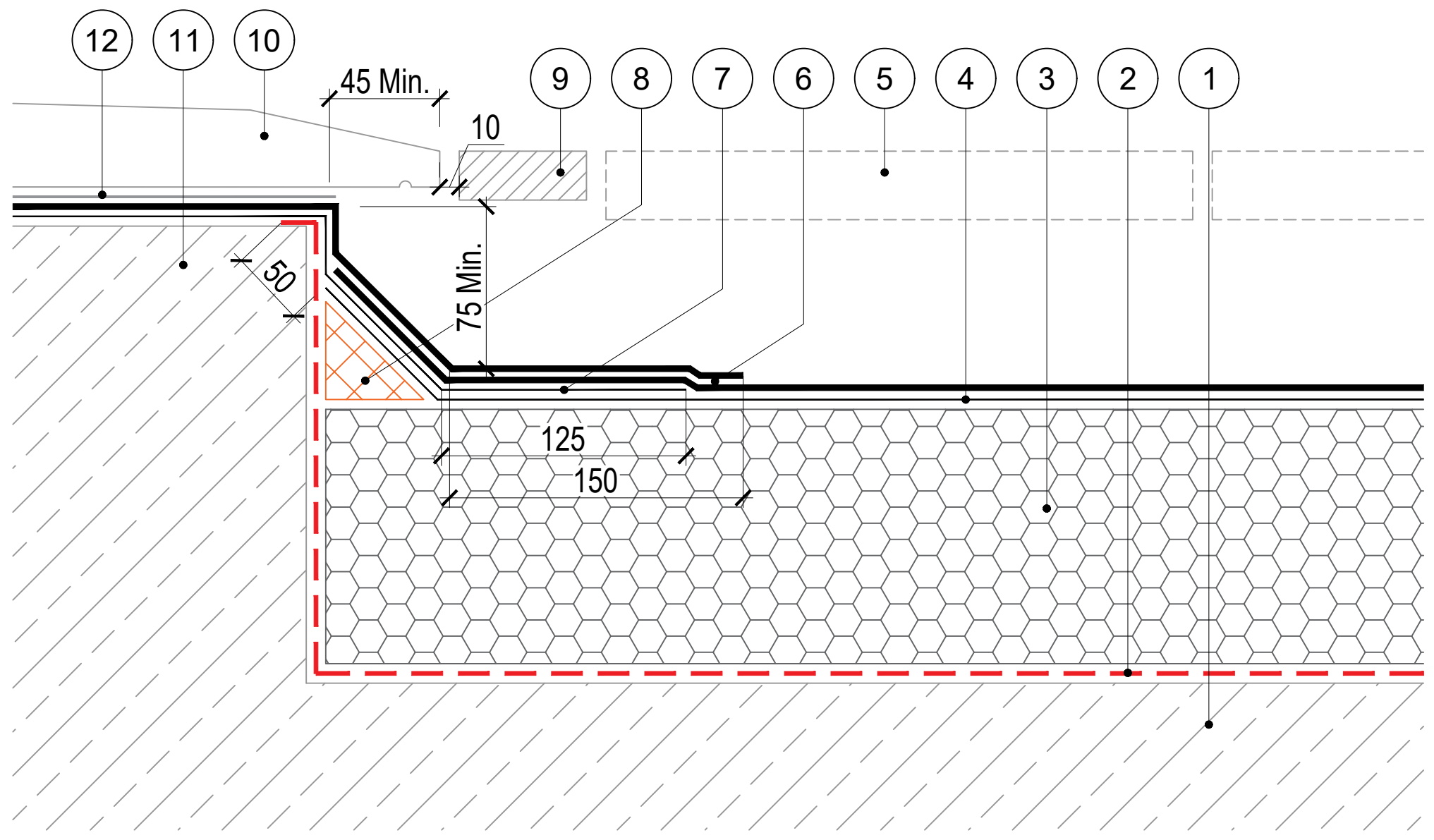


This detail should follow NHBC guidance for a min 75mm upstand to door sill detail. The sill detail must be at the highest point with positive falls to an outlet or drainage chute. An additional overflow must be provided at the lowest point to be a minimum of 25mm below the underside of the door sill. The sill must project a minimum of 45mm to shed rainwater away from the interface with the waterproofing layer. A minimum 150mm waterproofing upstand above the finished surface must be provided at all perimeter wall details to maintain a minimum 150mm splash zone. Decking or paving should be provided on suitable drained supports to provide an accessible threshold with min. 10mm gap between deck/paving and perimeter upstands/thresholds and 5-8mm gap between decking/paving units.



1. Substrate designed to 1:40 falls (or flat with Tapered Insulation) primed with appropriate SIGNature Primer.
2. SIGNature Air and Vapour Control Layer.
3. SIGNature approved PIR Insulation adhered with IKOpro High Performance PU Adhesive, Tapered/Flatboard - (if tissue faced, primed with IKOpro Bonding Agent), thickness to achieve design U-value, designed to 1:40 falls as per BS6229:2018).
4. SIGNature Underlay as per Specification.
5. Suitable Paving/Decking on proprietary supports to provide accessible threshold. 5-8mm gap between each unit.
6. SIGNature Torch on Capsheet.
7. SIGNature Detailing Underlay as per Specification.
8. IKO Insulation Angle Fillet bonded with IKOpro High Performance PU Adhesive.
9. Anti-splash drainage channel - by others.
10. Sill - by others.
11. Upstand primed with appropriate SIGNature Primer.
12. DPC - by others.

The waterproofing system should be installed in accordance with BS6229 (current), BS8217 (current) and AccuRoof project Specification. The details shown are indicative and for approval only and do not form part of any contract. Data sheets for all SIGNature products are available on request.

A	22/08/23	AT	Original Detail
Rev:	Date:	By:	Description:



Unit 31F, Mannheim House, Gelders Hall Road, Shepshed, Loughborough, LE12 9NH
 Tel: 01509 501731
 Email: Technical@accuroof.co.uk
 Web: www.accuroof.co.uk

Drawing No:	SIGN-RBM-016	Rev:	A
-------------	--------------	------	---

Scale:	Not To Scale	Date:	22/08/2023
--------	--------------	-------	------------

Drawing: Level Access Door Threshold