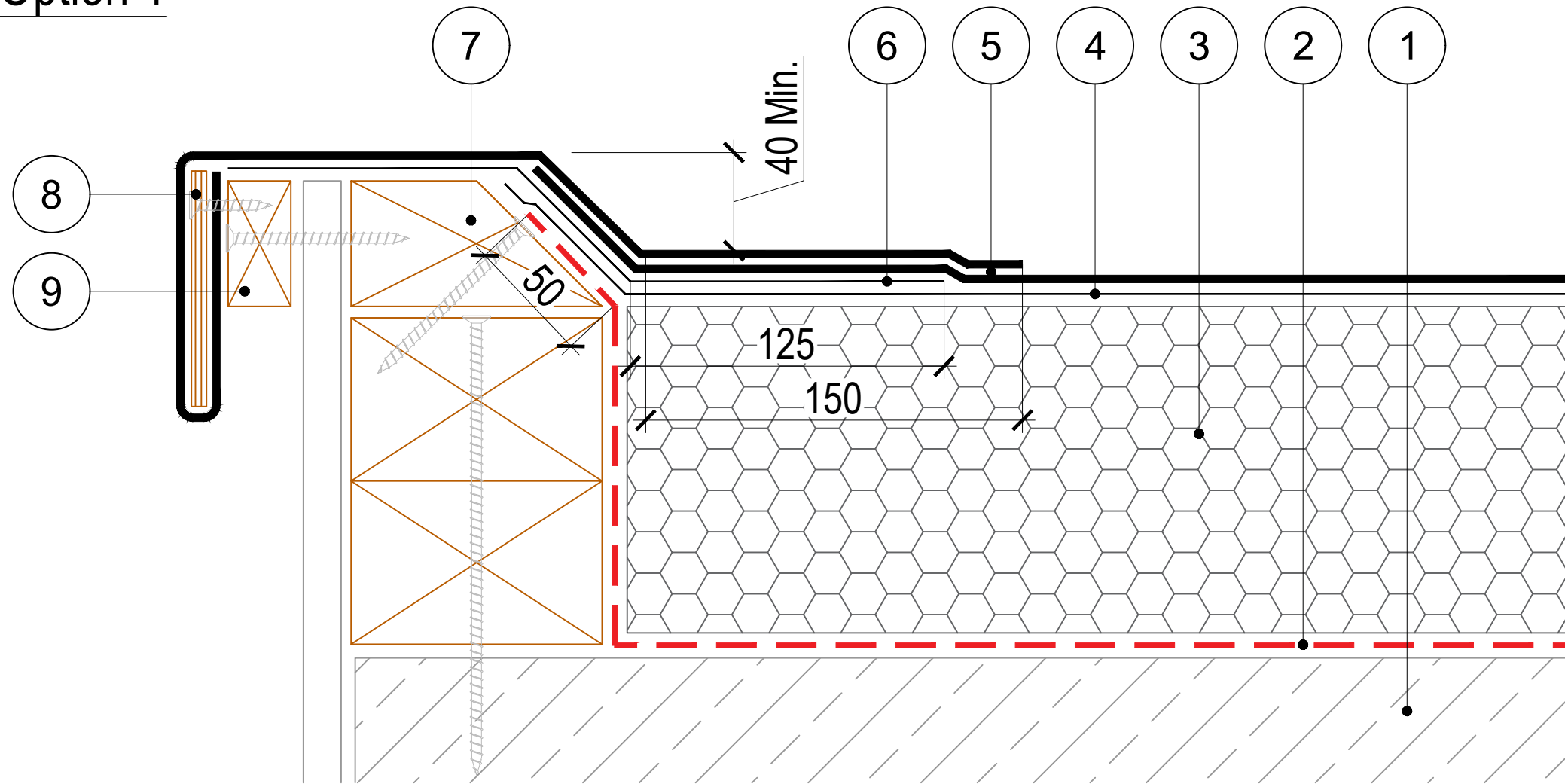


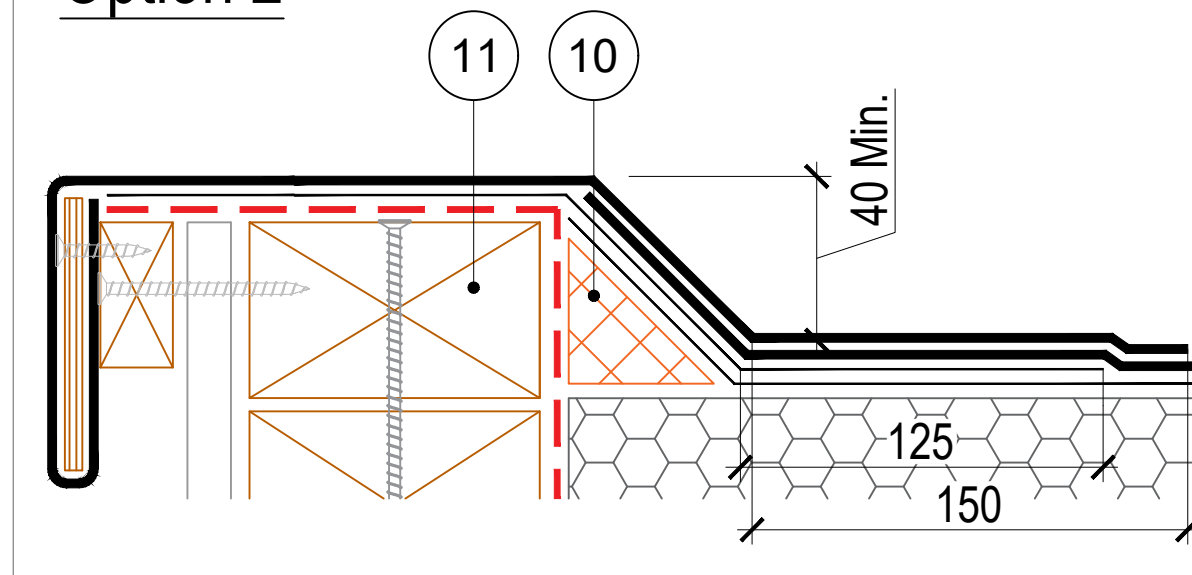
Option 1



1. Substrate designed to 1:40 falls (or flat with Tapered Insulation) primed with appropriate SIGNature Primer.
2. SIGNature Air and Vapour Control Layer.
3. SIGNature approved PIR Insulation adhered with IKOpro High Performance PU Adhesive, Tapered/Flatboard - (if tissue faced, primed with IKOpro Bonding Agent), thickness to achieve design U-value, designed to 1:40 falls as per BS6229:2018).
4. SIGNature Underlay as per Specification.
5. SIGNature Torch on Capsheet.
6. SIGNature Detailing Underlay as per Specification.
7. 100mm x 50mm profiled timber Check Fillet mech fixed and primed with appropriate SIGNature Primer.
8. Welted Drip in SIGNature Torch on Capsheet - formed with min. 75mm x 6mm Plywood Former, mech fixed to Drip Batten.
9. Timber Drip Batten - mech fixed.
10. IKO Insulation Angle Fillet - bonded with IKOpro High Performance PU Adhesive.
11. Timber Kerb by others - primed with appropriate SIGNature Primer.

The waterproofing system should be installed in accordance with BS6229 (current), BS8217 (current) and AccuRoof project Specification.
The details shown are indicative and for approval only and do not form part of any contract. Data sheets for all SIGNature products are available on request.

Option 2



| | | | |
|------|----------|-----|-----------------|
| A | 22/08/23 | AT | Original Detail |
| Rev: | Date: | By: | Description: |

ACCUROOF

Unit 31F, Mannheim House, Gelders Hall Road,
Shepshed, Loughborough, LE12 9NH
Tel: 01509 501731
Email: Technical@accuroof.co.uk
Web: www.accuroof.co.uk

| | | | |
|-------------|--------------|------|---|
| Drawing No: | SIGN-RBM-025 | Rev: | A |
|-------------|--------------|------|---|

| | | | |
|--------|--------------|-------|------------|
| Scale: | Not To Scale | Date: | 22/08/2023 |
|--------|--------------|-------|------------|

Drawing: Check Kerb - Timber Welted Drip