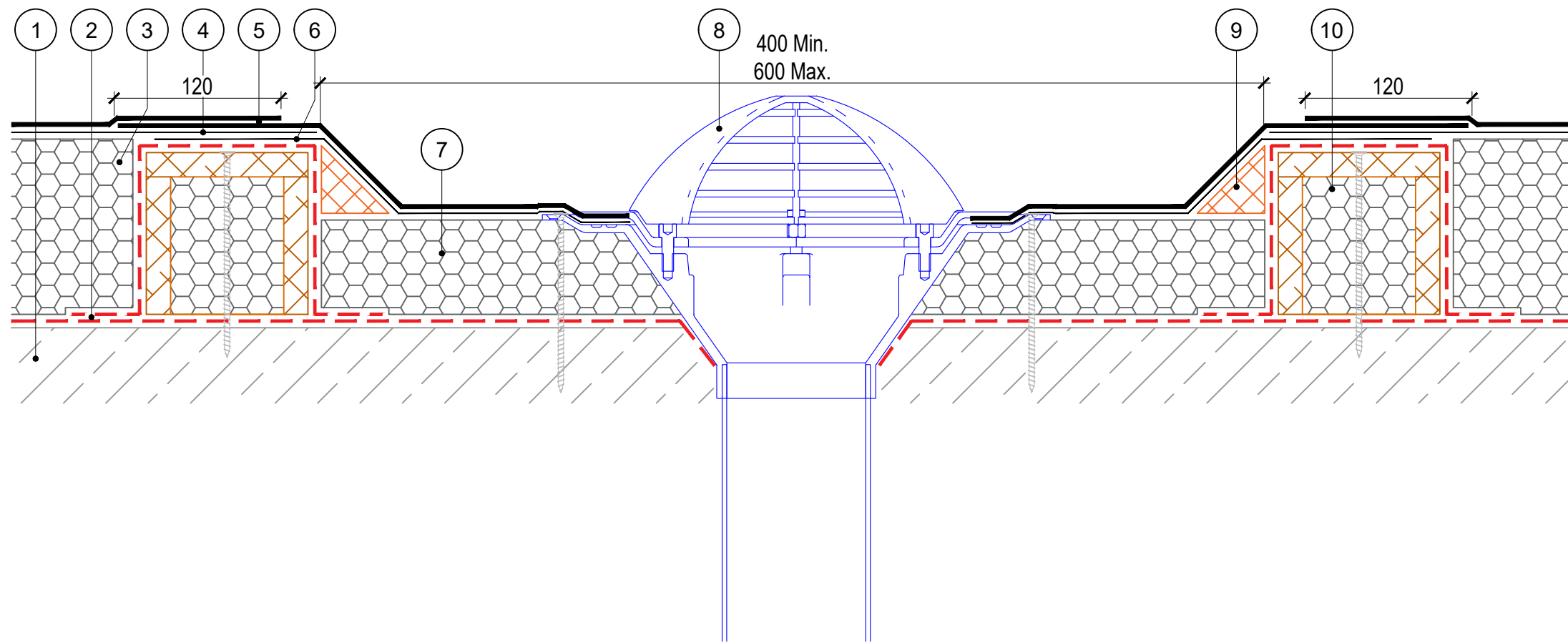


1. Substrate designed to 1:40 falls (or flat with Tapered Insulation) primed with appropriate SIGNature Primer.
2. SIGNature Air and Vapour Control Layer.
3. SIGNature approved PIR Insulation adhered with IKOpro High Performance PU Adhesive, Tapered/Flatboard - (if tissue faced, primed with IKOpro Bonding Agent), thickness to achieve design U-value, designed to 1:40 falls as per BS6229:2018).
4. SIGNature Underlay as per Specification.
5. SIGNature Torch on Capsheet.
6. SIGNature Detailing Underlay as per Specification.
7. SIGNature approved PIR dropped gutter Insulation adhered with IKOpro High Performance PU Adhesive - (if tissue faced, primed with IKOpro Bonding Agent).
8. AccuRoof supplied Metal Clamp Outlet with Leaf Guard - mech fixed.
9. IKO Insulation Angle Fillet - bonded with IKOpro High Performance PU Adhesive.
10. Insulated Timber Hard Edge mech fixed and primed with appropriate SIGNature Primer.



The waterproofing system should be installed in accordance with BS6229 (current), BS8217 (current) and AccuRoof project Specification.
 The details shown are indicative and for approval only and do not form part of any contract. Data sheets for all Signature products are available on request.

A	22/08/23	AT	Original Detail
Rev:	Date:	By:	Description:



Unit 31F, Mannheim House, Gelders Hall Road,
 Shepshed, Loughborough, LE12 9NH
 Tel: 01509 501731
 Email: Technical@accuroof.co.uk
 Web: www.accuroof.co.uk

Drawing No:	SIGN-RBM-029	Rev:	A
-------------	--------------	------	---

Scale:	Not To Scale	Date:	22/08/2023
--------	--------------	-------	------------

Drawing: Internal RWO - Vertical