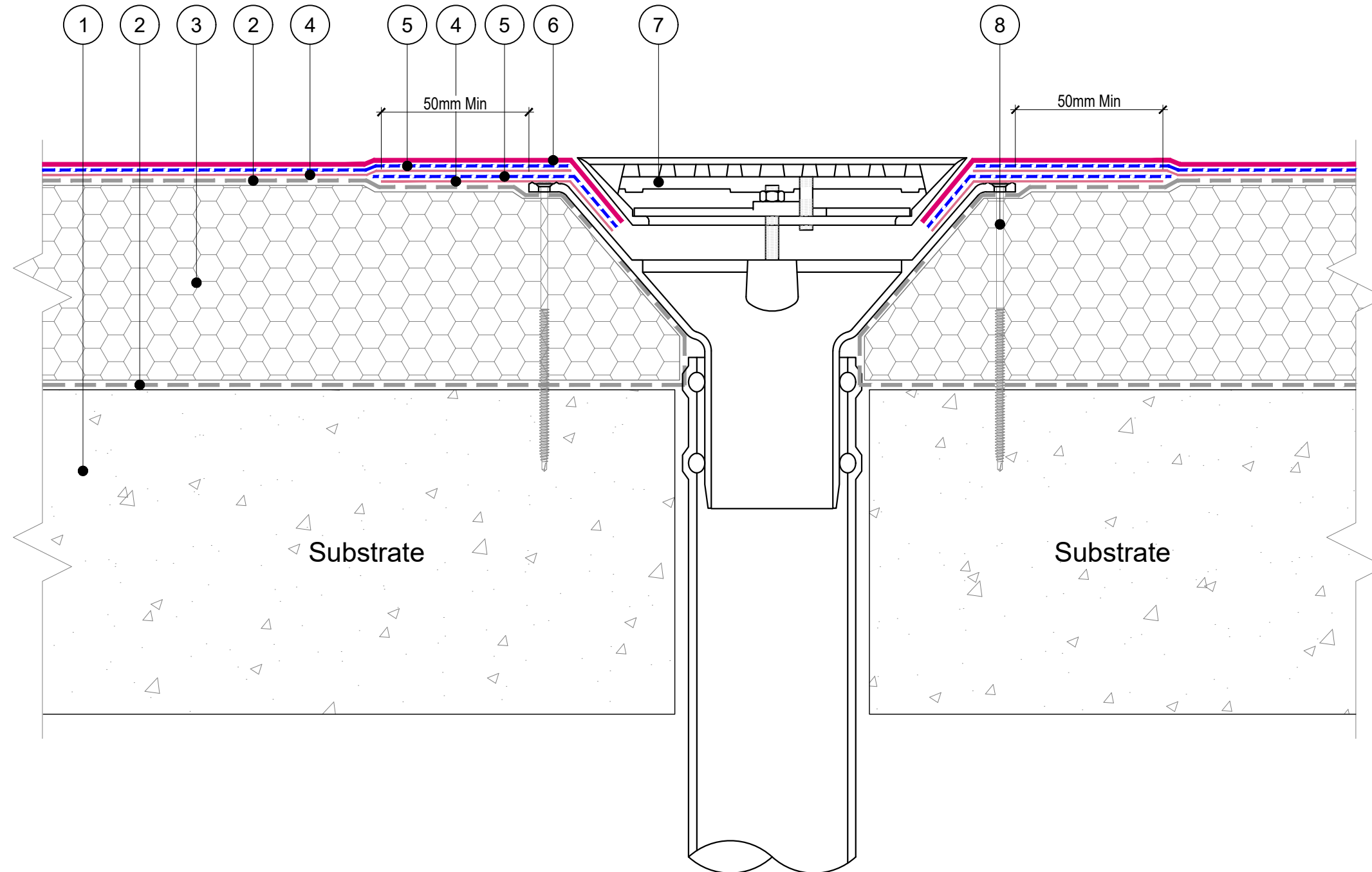


1. Substrate to minimum of 1:80 achieved falls, to be smooth clean, dry and free from dust, greese and frost, primed with SIGNature Ultra Protect AVCL / Carrier Primer.
2. SIGNature Ultra Protect approved Self Adhesive Carrier Membrane / Air & Vapour Control Layer (AVCL) overlapped at edges by 50-80mm and 150mm minimum at roll ends.
3. AccuRoof Supplied Insulation bonded with IKOpro High Performance PU Adhesive, primed with SIGNature Ultra Protect AVCL / Carrier Primer.
4. SIGNature Ultra Protect Base Coat (1no application of 1 l/m<sup>2</sup> coverage).
5. SIGNature Ultra Protect Chop Strand Mat Reinforcement minimum overlap of 50mm.
6. SIGNature Ultra Protect Top Coat (1no application 1 of l/m<sup>2</sup> coverage for 20 year system or 2no applications of 0.75 l/m<sup>2</sup> coverage for 25 year system, Each application of liquid needs to cure prior to applying the next).
7. AccuRoof Supplied Metal Clamp Outlet fully cleaned and free from grease and dirt prior to application, primed with SIGNature Ultra Protect Epoxy Metal Primer.
8. AccuRoof Supplied Fixings.



The waterproofing system should be installed in accordance with BS6229 (current), LRWA Guidelines and relevant Codes of Practice.

Project specifications are available on request.

Data sheets for all AccuRoof supplied products are available on request.

The details shown are indicative and for approval only and do not form part of any contract.

Further information on all AccuRoof products and services can be obtained through the contact details printed below.

A	28/04/22	PS	Original Detail
Rev:	Date:	By:	Description:

# ACCUROOF

Unit 31F, Mannheim House, Gelders Hall Road,  
Shepshed, Loughborough, LE12 9NH  
Tel: 01509 501731  
Email: [Technical@accuroof.co.uk](mailto:Technical@accuroof.co.uk)  
Web: [www.accuroof.co.uk](http://www.accuroof.co.uk)

Drawing No:	SIGUP-15	Rev:	A
-------------	----------	------	---

Scale:	Not To Scale	Date:	28/04/2022
--------	--------------	-------	------------

Drawing: **SIGNature Ultra Protect  
Metal Rainwater Outlet Detail**