

PRECISION IN SPECIFICATION

SIGnature Ultra Protect waterproofing system

ACCUROOF
A part of SIG Roofing

SIGNATURE[®]
LIQUID WATERPROOFING

Description

SIGNature Ultra Protect is a complete roof waterproofing system. Tried and tested polyurethane technology provides the reassurance of a long-lasting roof, further supported by the awarding of BBA certificates for systems assessed to provide a durable waterproof coating with service lives in excess of 20 and 25 years.

The SIGNature Ultra Protect system is able to withstand the stresses that roofs experience due to its elastomeric properties. Fast-curing components, and cross-linking technology make this a fast and easy to install system for the professional contractor.

Long Lasting Waterproofing

The BBA has awarded certificates for both 20 and 25 year system options. This provides the professional contractor, architect or specifier, and the building owner the reassurance they demand. BBA Agrément Certificate 22/5994. 20 and 25 Years.

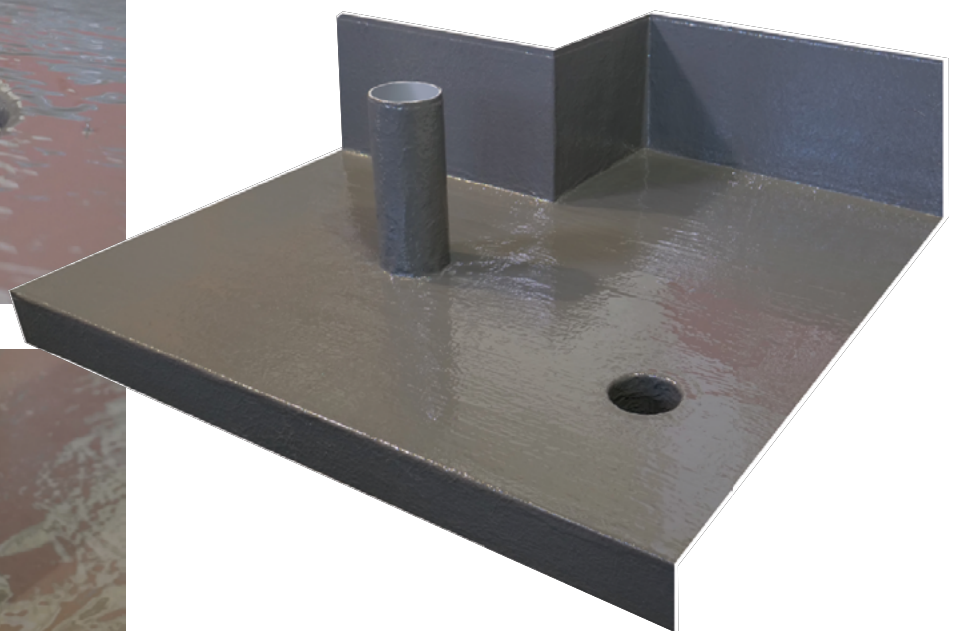
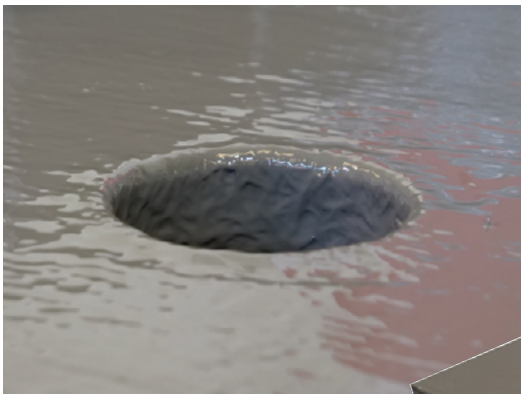
Fire Performance

Fire performance has never been more important to industry professionals. SIGNature Ultra Protect has been tested on a range of common roof build-ups for both flat & pitched roof applications. Testing in accordance with EN 13501-5: 2016 Test method: CEN/TS 1187: 2012 Test 4. Classification: B_{ROOF}(t4).

Refurbishment and New Build

With its ability to adhere to a range of common roofing substrates, SIGNature Ultra Protect is a versatile system that can be installed over *OSB3, *suitable ply, mastic asphalt, Bitumen felts, PVC single-ply, metal, concrete, PU liquid applied coatings and *approved Tissue Faced insulation.

*SIGNature Ultra Protect AVCL should be installed as a carrier membrane over all timber-based and approved Tissue Faced insulation boards substrates prior to application of the SIGNature Ultra Protect system.



Preparation:

1. Surfaces must be clean, dry, and free from debris, fungal growth and any other contaminants before use.
2. Cracks, holes, and other defects must be repaired prior to waterproofing application.
3. Most substrates require priming with the appropriate SIGnature Ultra Protect Primer prior to the application of the base coat (refer to primer data sheets). It is advised that adhesion tests are carried out onsite prior to application to ensure sufficient adhesion can be achieved and to determine priming requirements. SIGnature Ultra Protect AVCL, when used as a carrier membrane, does not require primer application to the upper surface prior to applying SIGnature Ultra Protect.

Application:

1. Apply the base coat with a brush or roller at a rate of 1.00L/m². Apply to perimeters & roof details prior to waterproofing field areas.
2. Roll 225gsm CSM (Chopped Strand Mat) into the wet Base Coat immediately after application ensuring no creases are formed. The components of SIGnature Ultra Protect cause the CSM to break down into individual fibres when embedded into the Base Coat, reducing the risk of creasing, and ensuring each run of matting is fully incorporated into the next. CSM must be overlapped by a minimum of 50mm to ensure consistent system reinforcement.
3. When the Base Coat has been allowed to cure (approx. 6-12 hours at 20°C), apply the Top Coat with a brush or roller – coverage rates dependent on the expected system lifespan required.
4. Allow the Top Coat cure (approx. 6-12 hours at 20°C).

Primer	Substrate
SIGnature Ultra Protect Multipurpose Primer	Bitumen Felt / Mastic Asphalt / Concrete
SIGnature Ultra Protect PVC Primer	PVC Single Ply
SIGnature Ultra Protect Epoxy Metal Primer	Metal
SIGnature Ultra Protect Reactivation Primer	SIGnature Ultra Protect base coat exposed in excess of five days and aged areas under repair prior to the application of further coats
SIGnature Ultra Protect AVCL / Carrier Membrane Primer	Suitable deck and SIGnature Ultra Protect approved insulation prior to application of SIGnature Ultra Protect approved AVCL / Carrier Membrane

* Must be touch dry not tacky before further product application

Benefits:

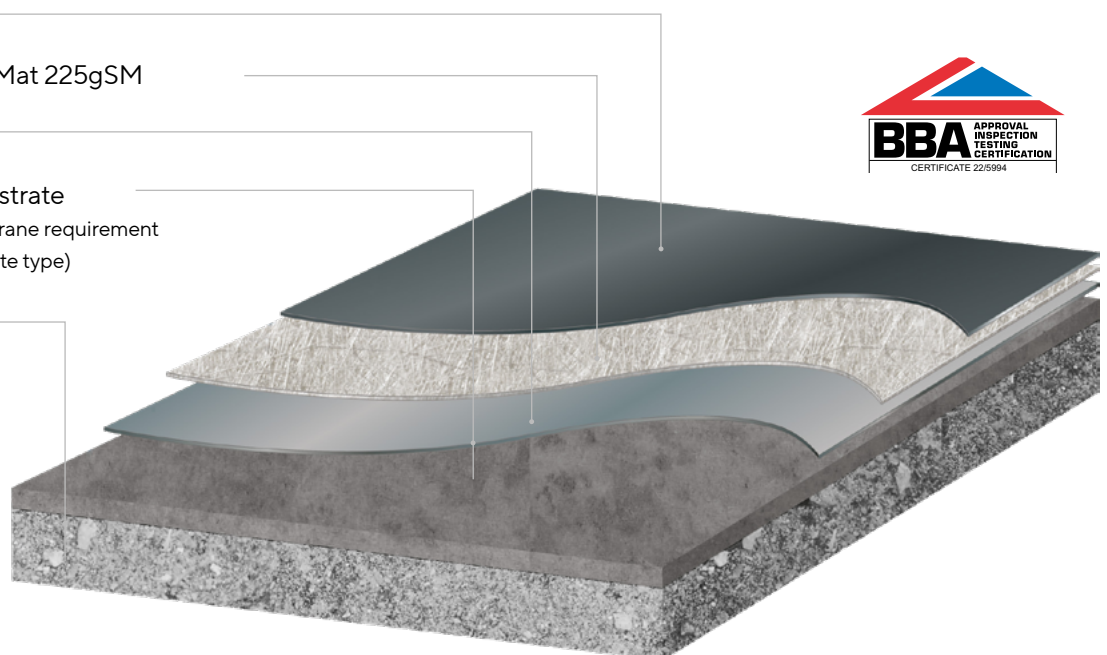
- / Simple Installation: Simple range of components. Apply straight out of the can
- / Long Lasting Waterproofing: BBA approved for 20 and 25 year projects
- / B_{ROOF}(t4) fire tested - consult Accuroof Technical Office for more information
- / Refurbishment and New Build: Wide project range with consistent application methods
- / Compatible with Multiple Substrates: Concrete; asphalt; bituminous roofing membranes, including mineral surfaced; steel; PVC membranes; existing polyurethane coatings; plywood in conjunction with a specified carrier membrane; polyisocyanurate (PIR) foam insulation boards in conjunction with a SIGNature Ultra Protect approved AVCL / Carrier Membrane and primer; mineral wool insulation boards in conjunction with a SIGNature Ultra Protect approved AVCL / Carrier Membrane and primer.
- / Two Roof Colour Options with One System: Base Coat can be either Coat A or B determined by surface colour preference. Both Coat A and B should be used to complete the installation to ensure full coverage rates are achieved. Talk to the AccuRoof Technical Office for more information.

Fire Performance

A high fire rating is a critical prerequisite for any waterproofing system. Independent and rigorous testing shows that SIGNature Ultra Protect achieves a B_{ROOF}t4 fire rating once installed, tested for both sloped and flat formats.

Classification report for roofs/roof coverings exposed to external fire in accordance with EN 13501-5:2016 on SIGNature Ultra Protect Light Grey and Dark Grey. Test method: CEN/TS 1187:2012 Test 4. Classification: B_{ROOF}(t4).

- / Top Coat
- / Chopped Strand Mat 225gSM
- / Base Coat
- / Existing Roof Substrate
(Primer/Carrier Membrane requirement determined by substrate type)
- / Deck



Notes

Suitability:

Please contact AccuRoof if you have any questions regarding specific substrates and their preparation.

Substrate quality:

The substrate must be solid and in a suitable condition prior to adhering and be able to resist any wind uplift forces.

Storage and handling:

The product should be stored unopened in a dry condition at a temperature of 5-25°C. This will ensure the stated shelf life. The product will have a limited life once the container is opened.

Temperature and timings:

All information on temperature and timings represents normal working conditions and is provided as a guideline only.

Disclaimer:

AccuRoof has taken care to ensure that the information provided in the literature is correct and up to date. However, it is not intended to form any part of a contract or provide a warranty. Purchasers/ intending purchasers should contact AccuRoof to verify whether there have been any changes to the provided information since publication of the literature.

Please ensure you have read the hazard labels and Safety Data Sheet before using this product.

	Coat A	Coat B
Material	Polyurethane	
Appearance	Light Grey	Dark Grey
Application Temperature	5 - 30°C	
Temperature Resistance Range	-30 - 80°C	
Expected Cure Time (per coat) at 20°C	6 - 12 hours	
Moisture Tolerance at 20°C	1 - 2 hour(s)	
Shelf Life	12 months	
Storage Temperature	5 - 25°C	
Coverage	20 Year System Base Coat: 1L/m ² . Top Coat: 1L/m ²	
	25 Year System Base Coat: 1L/m ² . Top Coat: 2 coats at 0.75L/m ²	
Unit Size	15 litres e	

About AccuRoof

For accurate, impartial advice that will help you confidently select the right roofing system for your project, you can depend on AccuRoof.

What makes us different? We're not a manufacturer. Instead, we curate our range of high quality roofing systems from suppliers we trust for both new-build and refurbishment projects. That's why architects, specifiers, and main contractors rely on our specialist, unbiased recommendations. We save you time and stress, so you can focus on the bigger picture.

Our six-step guide to an optimal roof is just a snapshot of the free support on offer from our technical team, right through your project's timeline. From recommending suitable materials that meet the latest regulations, to inspections and guarantees.

AccuRoof is a part of SIG Roofing, a division of SIG plc, a FTSE listed company and the UK's market leading specialist supplier to professionals in the building and construction industry.

/ AccuRoof, Manheim House,
Gelders Hall Road, Shepshed,
Leicestershire LR12 9NH

/ 01509 505 714
info@accuroof.co.uk
www.accuroof.co.uk

Six steps to an optimal roof:



/ Project kick off

- / The right products
- / Design expertise
- / Meet the regulations



/ Confidence in supply



/ Experienced contractors



/ Monitored installation



/ Transparent guarantees



/ Planned maintenance